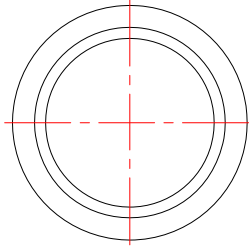
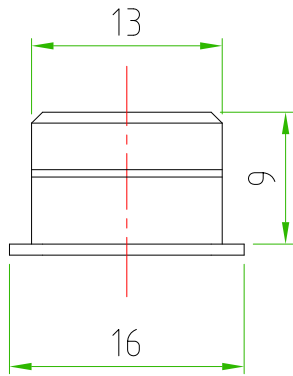


Rev.				
Modify				
Date				
Signed				
Approved				

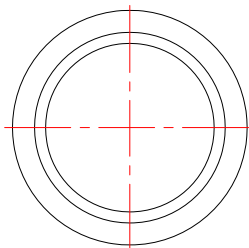


Rev.				
Modify				
Date				
Signed				
Approved				



CONNECTOR FEATURES	PRODUCT TYPE	M12 PLASTIC CAP
	TYPE	FEMALE
	SHAPE	CIRCULAR
	MATERIAL	POLYETHYLENE
	PACKAGING:	PLASTIC BAG 1000 PCS

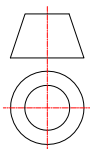
Rev.				
Modify				
Date				
Signed				
Approved				



CUSTOMER APPROVAL	
SIGNATURE	DATE
PLEASE SIGN AND RETURN	

A4

Designer	SUGLIANI R.	Date	2018-03-12	Tolerance	±0.3	Units:	mm	Series	M12	Drawing n.
Approved	CIMMINO L.	Date	2018-03-12	Scale	2:1	Size:	A4	Customer code:		



DESCRIPTION
M12 PLASTIC CIRCULAR CAP,FEMALE,
M12 CAP SUITABLE FOR M12 MALE CONNECTOR.

H.T.P.PART NUMBER

CAPS-12-F-P