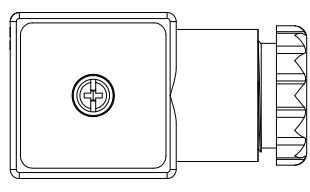
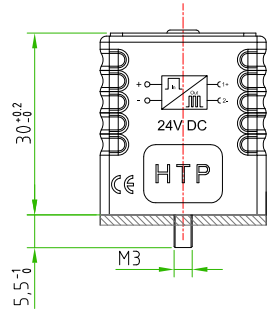
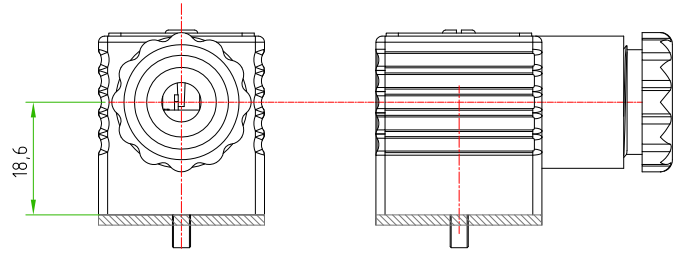
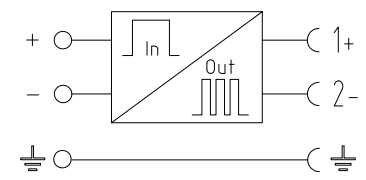
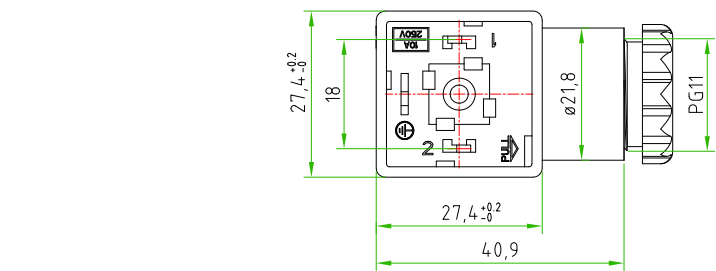


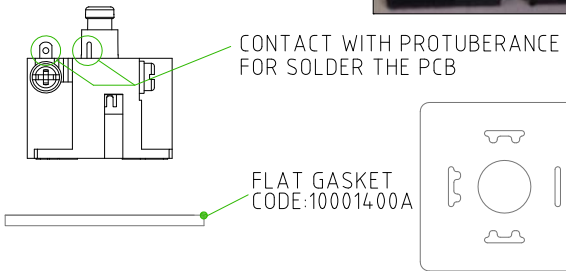
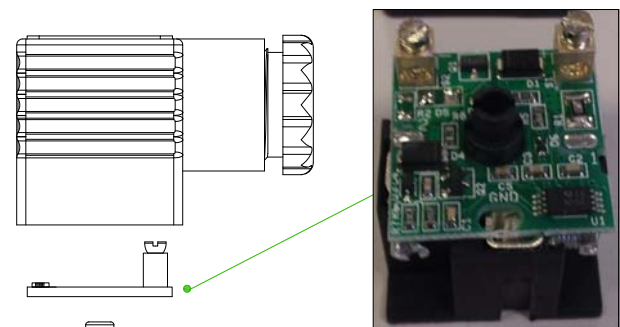
Rev.	Modify	Date	Firma	Approved

Rev.	Modify	Date	Firma	Approved

Rev.	Modify	Date	Signed	Approved



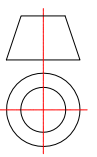
CONNECTOR FEATURES	
PRODUCT TYPE	EN175301-803 INDUSTRY STANDARD FORM A; FIELD ATTACHABLE
HOUSING COLOUR	BLACK
PRESS-CABLE COLOUR	BLACK
HEIGHT HOUSING	30mm
CONTACTS SPACING	18mm
CONTACTS TYPE	SCREW CONTACTS
NUMBER OF POLES	2POLES+EARTH
EARTH POSITIONING	H.12 (TURNABLE)
CABLE EXIT	PG9/11 UNIFIED
SUITABLE CABLE	FROM ø6mm TO ø10mm
PROTECTION CLASS	IP67
CIRCUIT TYPE	WITH ENERGY SAVING CUSTOMIZED
RATED VOLTAGE	24V DC ±10%
TIME BOOST	130ms
POWER MAINTENANCE	40% POWER MAX.
NOMINAL POWER	8W
MAX.POWER	36W
GASKET TYPE	FLAT NBR (CODE:10001400A)
FIXING SCREW	M3X0,5 L=32,5mm(CODE:100015000)
CONNECTOR TEMPERATURE RANGE	from -20°C to +70°C
MAX.CONDUCTOR SIZE	1,5mm ²
CONNECTOR WITH H.T.P. LOGO	



CUSTOMER APPROVAL	
SIGNATURE	DATE
PLEASE SIGN AND RETURN	

Designer	SUGLIANI R.	Date	2017-06-09	Tolerance	±0,2	Units:	mm	Series	EN175301-803 (form A)	Drawing n. 1-1
Approved	CIMMINO L.	Date	2017-06-09	Scale	TO FIT	Size:	A4	Customer code:		

A4



DESCRIPTION
 SQUARE CONNECTOR EN175301-803 FORM A, FIELD ATTACHABLE, 2P. +PE, WITH ENERGY SAVING CIRCUIT (CUSTOM), 24V DC, PG9/11 unified, BLACK HOUSING CONNECTOR WITH H.T.P. LOGO

H.T.P. PART NUMBER
 G1NU2ES1